



## Larch Place, Romford, RM3 0JL

### £1,450 Per Calendar Month



**\*\*SPACIOUS APARTMENT WITH GATED ALLOCATED PARKING AND BALCONY\*\***

OC Homes are delighted to present this stunning one bedroom apartment situated in the popular Kings Park Development in Harold Wood. Located on the top/second floor, the property offers a large open plan lounge with contemporary fitted kitchen with Smeg appliances, double bedroom benefiting from fitted wardrobes, three piece bathroom suite and ample storage space.

The property also boasts secure video intercom entry, allocated parking within a private gated car park, large balcony and is ideally situated in close proximity to local amenities and public transport links. Harold Wood rail station is a short walk from the property making this ideal for commuters.

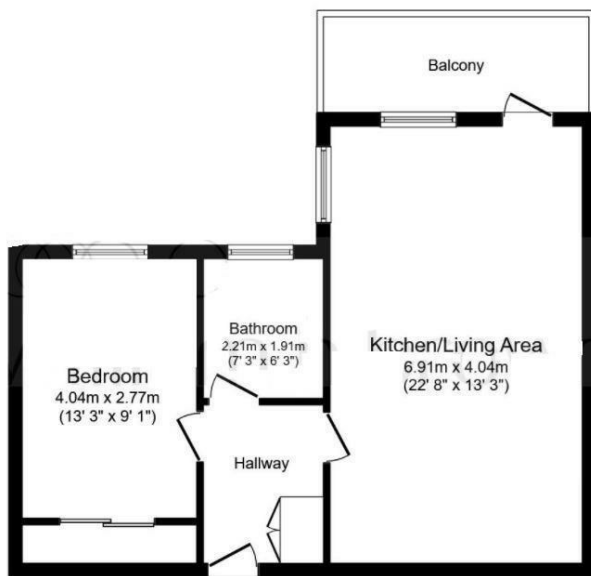
AVAILABLE 02/01/26

- ALLOCATED PARKING IN PRIVATE GATED CAR PARK
- BALCONY
- WALKING DISTANCE TO HAROLD WOOD RAIL STATION
- LARGE OPEN PLAN LOUNGE
- MODERN KITCHEN WITH FITTED SMEG APPLIANCES
- SECURE VIDEO INTERCOM ENTRY
- AVAILABLE 01/11/21

### Viewing

Please contact our OC Homes Leyton Office on 02085561212 if you wish to arrange a viewing appointment for this property or require further information.

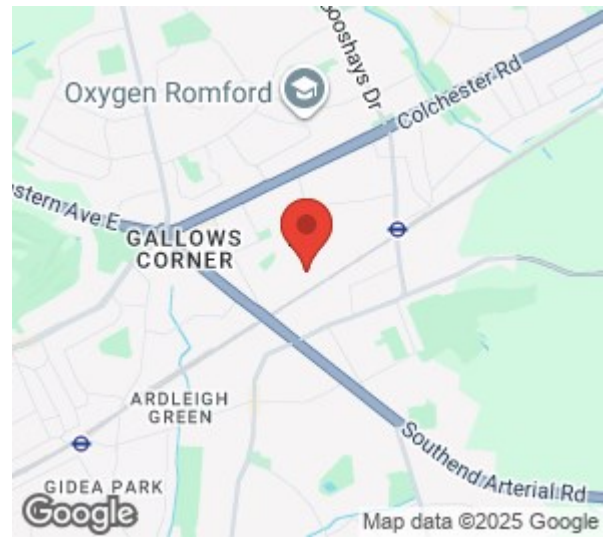




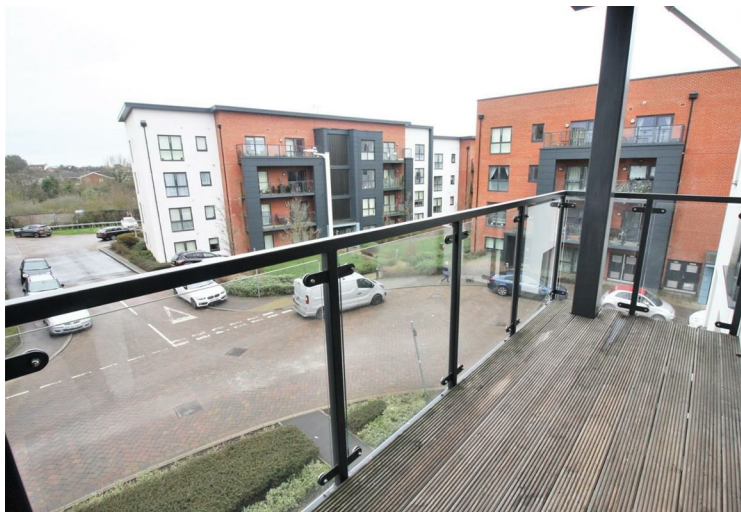
Floor Plan

This plan is for illustration purposes only and may not be representative of the property.  
Plan not to scale.

Powered by focalagent.com



Energy Efficiency Rating			Environmental Impact (CO <sub>2</sub> ) Rating		
	Current	Potential		Current	Potential
Very energy efficient - lower running costs			Very environmentally friendly - lower CO <sub>2</sub> emissions		
(92 plus) A			(92 plus) A		
(81-91) B			(81-91) B		
(69-80) C			(69-80) C		
(55-68) D			(55-68) D		
(39-54) E			(39-54) E		
(21-38) F			(21-38) F		
(1-20) G			(1-20) G		
Not energy efficient - higher running costs			Not environmentally friendly - higher CO <sub>2</sub> emissions		
England & Wales	EU Directive 2002/91/EC		England & Wales	EU Directive 2002/91/EC	



These particulars, whilst believed to be accurate are set out as a general outline only for guidance and do not constitute any part of an offer or contract. Intending purchasers should not rely on them as statements of representation of fact, but must satisfy themselves by inspection or otherwise as to their accuracy. No person in this firm's employment has the authority to make or give any representation or warranty in respect of the property.